



WHIT DAVIS



OVERVIEW

The Whit Davis Attendance Zone is an area located in Southeast Clarke County. The area is bordered by Lexington road to the north, Oglethorpe County to the east, Oconee County to the south, and Barnett Shoals to the west.

SCHOOLS:

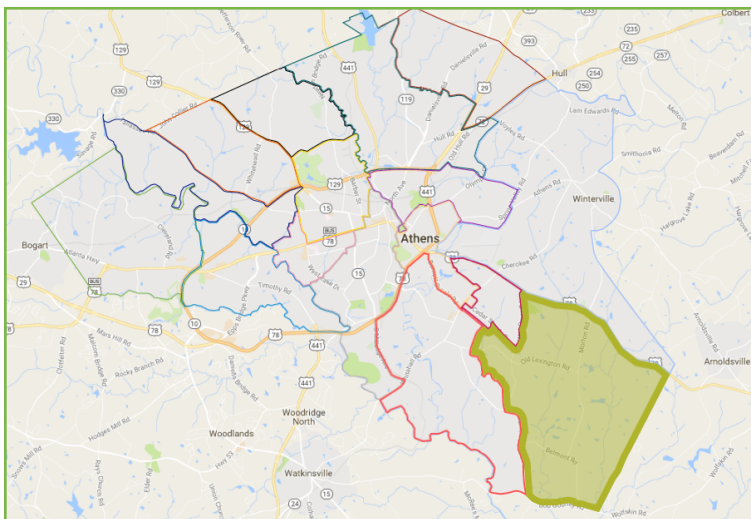
- ▶ Whit Davis School

NEIGHBORHOODS:

- ▶ Timber Creek Drive
- ▶ Big Oak Circle
- ▶ Morton Road
- ▶ Old Lexington Road
- ▶ Carrington
- ▶ Hunters Ridge
- ▶ Waverly Woods
- ▶ Falling Shoals

POINTS OF INTEREST:

- ▶ Southeast Clarke Park
- ▶ Thompson Park
- ▶ Healing Path Farm
- ▶ Athens Landfill
- ▶ Skate Park of Athens
- ▶ World of Wonder
- ▶ Classic Groundcovers
- ▶ Athens Wholesale Nursery
- ▶ Morton Chapel
- ▶ Cornerstone Church
- ▶ Shoal Creek



Respondent Characteristics

- ▶ **47** was the average age of respondent
- ▶ **10%** are currently enrolled in college~
- ▶ **14%** of households have veteran status+
- ▶ **98%** of households have Internet access+
- ▶ **25%** moved in the last two years~
- ▶ **14%** of households currently receiving welfare benefits

PLEASE NOTE:

The following symbols are used to designate when measures in this report are higher or lower than the county average:

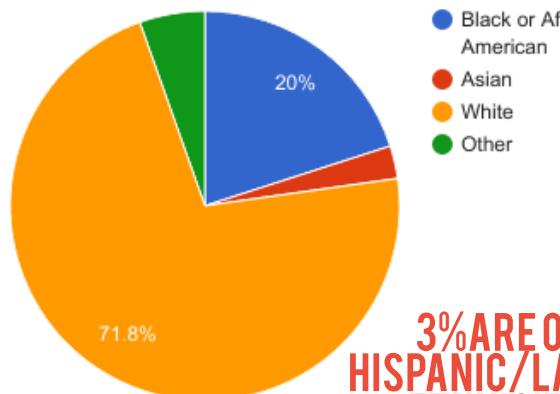
+ higher than county

~ lower than county

Lack of a symbol means the measure is about the same as the county.

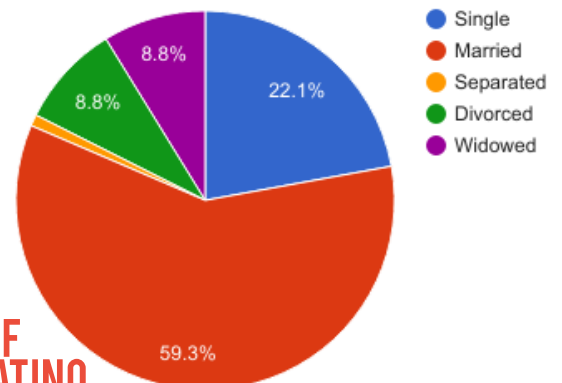
DEMOGRAPHICS

RACE/ETHNICITY

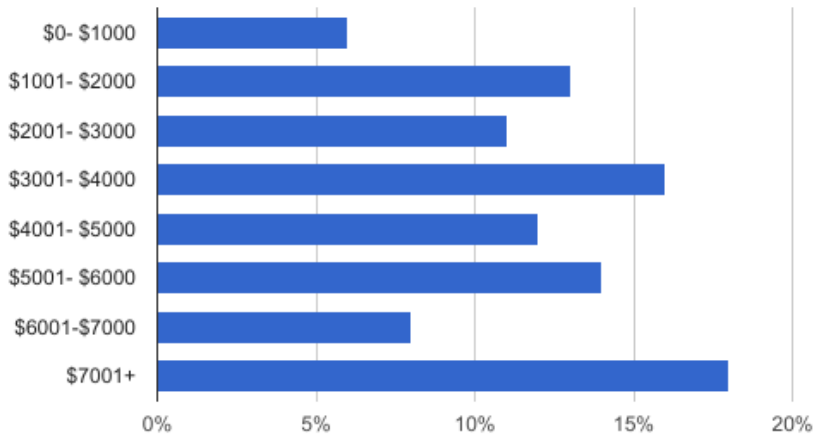


3% ARE OF HISPANIC/LATINO ETHNICITY

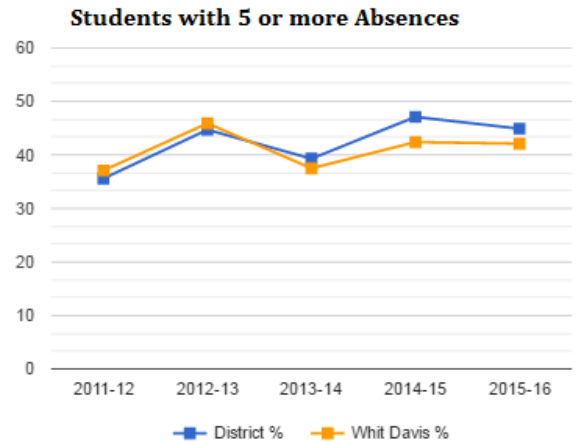
MARITAL STATUS



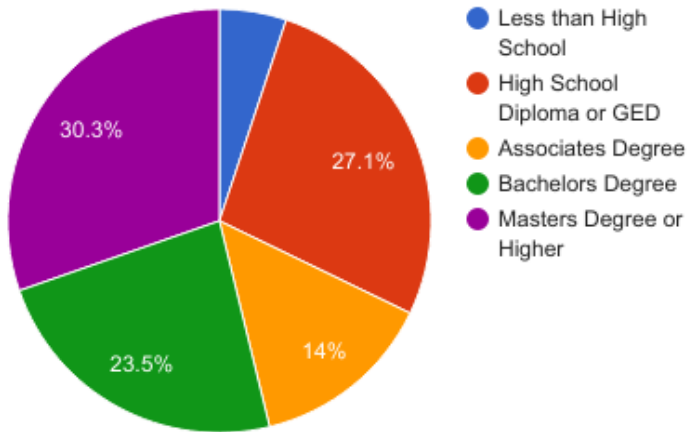
MONTHLY HOUSEHOLD INCOME



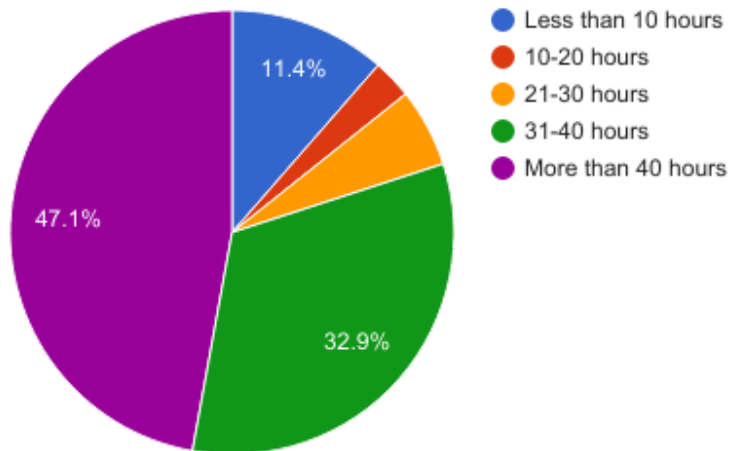
STUDENT ATTENDANCE



EDUCATION LEVEL



HOURS WORKED IN A WEEK

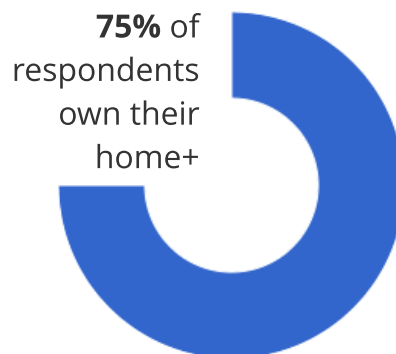


TOP 6 DESIRED AMENITIES

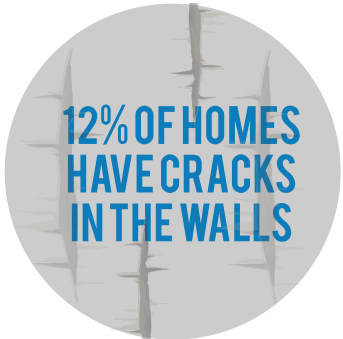
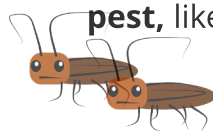
1. WALKING PATHS AND TRAILS
2. BIKE PATHS AND TRAILS
3. COMMUNITY GARDENS
4. COMMUNITY CENTERS
5. IMPROVED SIDEWALKS
6. PARKS AND PLAY GROUNDS



HOUSING



About **9%** of all households reported having some kind of **pest**, like **rats or roaches**~



LIFELONG LEARNING

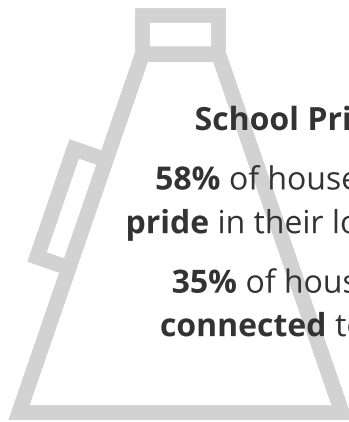
86% ARE CONFIDENT IN ABILITY TO HELP CHILD AT HOME+

73% AGREE SCHOOLS ARE CLEAN~

59% AGREE SCHOOLS "DO GOOD" IN NEIGHBORHOODS

41% WANT TO BE MORE INVOLVED IN SCHOOLS+

52% FEEL SCHOOLS ARE WELCOMING



School Pride

58% of households have **pride** in their local schools

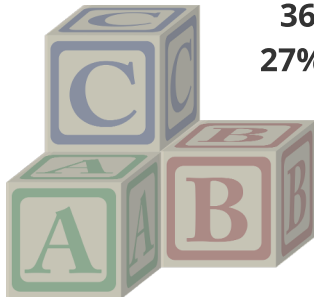
35% of households feel **connected** to their local schools~



14% OF HOUSEHOLDS VISIT SCHOOLS FOR CULTURAL EVENTS~

Childcare

37% of households use some form of childcare~

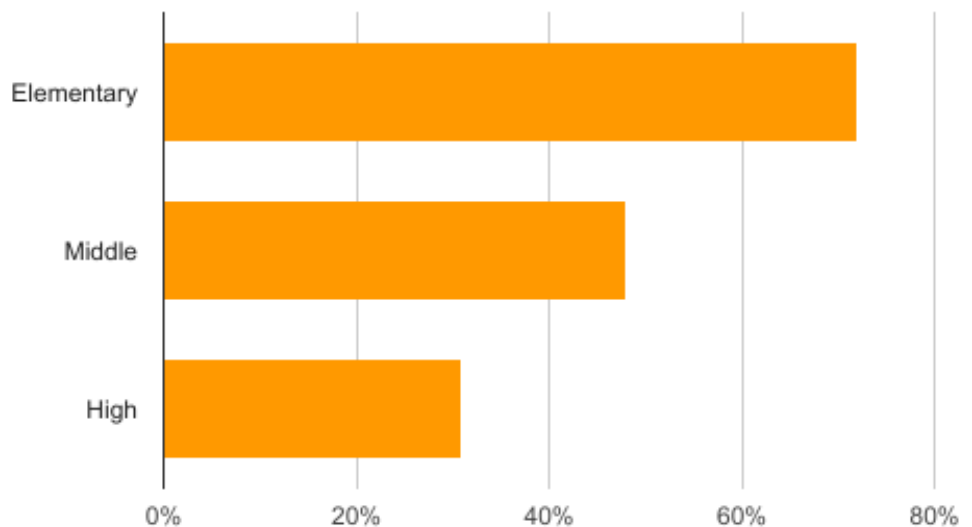


36% use daycares+
27% stay with family friends+

73% stay with grandparents+

There is a lower than average perception of gang activity in schools.-

PERCEIVED SCHOOL SAFETY



Percent of Respondents who Believe Schools are Safe

CIVIC VITALITY

88% SAY THEY ARE SATISFIED WITH LIFE THESE DAYS+

75% SAY THEY ARE SATISFIED WITH THEIR JOB

90% SAY THEY ARE SATISFIED WITH HOME LIFE+

Political Engagement

84% of households know where to vote+

91% are registered to vote+

70% voted within the last 12 months~



50% signed a petition in the last 12 months+

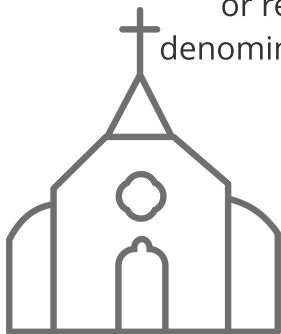
26% corresponded with an official

36% attended a public meeting in the last 12 months~



76% SAY THEY PAY ATTENTION TO GOVERNMENT OVERALL+

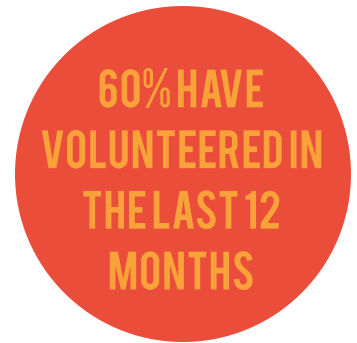
67% of households belong to some church or religious denomination+



43% believe they can influence decisions affecting Athens~



60% HAVE VOLUNTEERED IN THE LAST 12 MONTHS



63% GATHER SOCIALLY AT LEAST WEEKLY

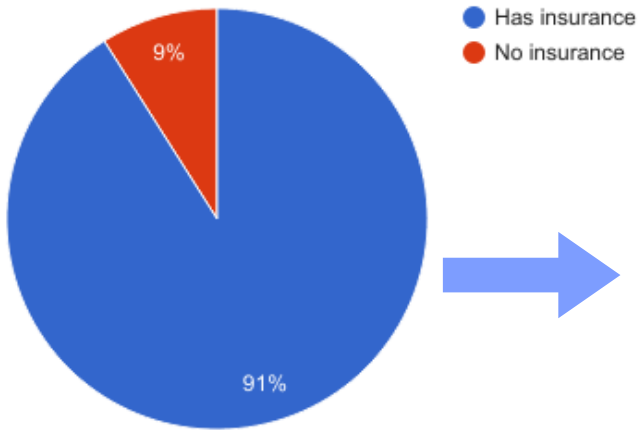


76% HAVE DONATED MONEY TO CHARITY ~



HEALTH

INSURANCE COVERAGE+



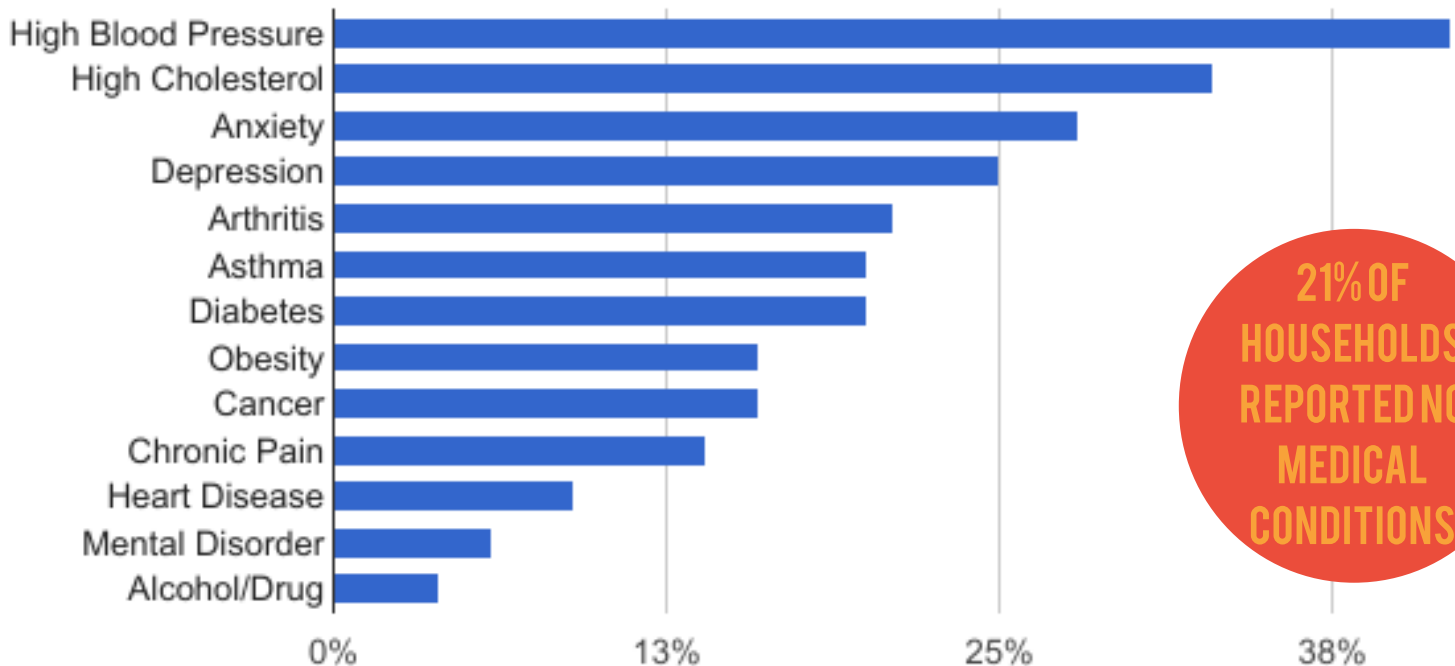
Of those with health insurance coverage, **13% were denied at a medical practice** in the least 12 months~



On a scale of 1-4, with 1 being the worst, when ask about their general health, the average rating for households was 2.4

On average, households in your school zone eat fast food 1.6 days out of the week+

HEALTH CONDITIONS REPORTED BY HOUSEHOLD



21% OF HOUSEHOLDS REPORTED NO MEDICAL CONDITIONS

Percent of households

COMMUNITY SAFETY

100% SAY THEY FEEL SAFE IN THEIR HOME

98% SAY THEY FEEL SAFE ON THEIR STREET+

95% SAY THEY FEEL SAFE IN LOCAL PARKS+

84% SAY THEY FEEL SAFE IN DOWNTOWN ATHENS

Neighborhood Relations

82% trust their neighbor+

89% think people in their neighborhood get along+

79% talked with neighbors in the last month for more than 10 minutes+

84% feel comfortable with their children playing in their neighborhood+

95% feel safe to walk or exercise in their neighborhood+



TOP 5 PERCEIVED NEIGHBORHOOD PROBLEMS

DOMESTIC ABUSE

DRUGS

THEFT

HOMELESSNESS

LITTER

Attendance data from The Governor's Office of Student Achievement, 2010-2016, and can be accessed here: <https://gosa.georgia.gov/downloadable-data>. All other data from the Athens Wellbeing Project (AWP) Fall 2016 Household Survey. County and neighborhood-level AWP profiles, as well as additional data resources, can be accessed here: <http://www.athenswellbeingproject.org/data/>.

Questions or comments? Please email James Barlament at barlamentj@clarke.k12.ga.us.